

ADVISORY GUIDELINES

REQUIREMENTS FOR TELECOMMUNICATION & RADIOCOMMUNICATION EQUIPMENT LABELLING

OBJECTIVE

1. AITI has prepared these Advisory Guidelines under Section 28 of the Telecommunications Order 2001 to provide guidance on its requirements for the labelling of telecommunications and radiocommunications products for sale within Brunei Darussalam.

REGULATORY POWERS

2. Section 6(1)(h) of the AITI Order 2001 states that it shall be the function and duty of the Authority to exercise licensing and regulatory functions in respect of telecommunication systems and services in Brunei Darussalam, including the establishment of standards and codes relating to equipment attached to telecommunication and radio-communication systems, and any equipment or software used as an adjunct to or in conjunction with such systems and the monitoring of and access to such equipment and software.
3. Section 28 of the Telecommunications Order 2001 allows AITI to make written advisory guidelines about any aspect of telecommunications. Advisory guidelines issued by AITI may be published as AITI thinks fit and a copy of the same be given to the Minister of Communications.
4. Section 9 of the Telecommunications Order 2001 allows AITI to specify conditions for compliance when approving equipment to be used for connection to any telecommunication system or equipment belonging to a telecommunication licensee.

INTRODUCTION

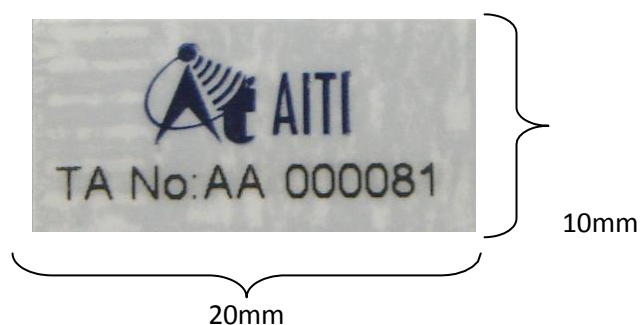
5. These Advisory Guidelines are issued in the interests of transparency and certainty to detail AITI's requirements for the labelling of telecommunications and radiocommunications equipment for sale within Brunei Darussalam.
6. Dealer Licences are required for the importation, sale, supply and/or resale of telecommunications and radiocommunications equipment in Brunei Darussalam.

Telecommunications and radiocommunications equipment for use in Brunei Darussalam must be Type Approved by AITI prior to importation. Equipment which has been Type Approved is hereinafter referred to as "Type Approved Equipment".

7. Compliance with these Advisory Guidelines is voluntary for holders of valid Dealer Licenses (hereinafter referred to as “Licensees”).
8. If Licensees choose to comply with these Advisory Guidelines, they are required to comply with the all the labelling requirements described herein.
9. The primary purpose of the labelling requirements described in these Advisory Guidelines is for the easy identification of Type Approved Equipment. This allows consumers to make an informed choice when purchasing telecommunications equipment.
10. AITI reserves the right to change, revise or revoke these Advisory Guidelines from time to time as it sees fit and without prior notice.
11. This document is available for free download from AITI’s website at www.aiti.gov.bn.
12. These Advisory Guidelines shall come into effect from 14 February 2011.

LABELLING

13. Licensees shall comply with AITI’s requirements on the manner of labelling as described in these Advisory Guidelines.
14. Approved Labels
 - 14.1 Licensees shall only use approved labels as specified in these Advisory Guidelines.
 - 14.2 Licensees are not permitted to reprint or reproduce the labels.
 - 14.3 Licensees will be allocated with supplies of the required labels by AITI. The quantity allocated is related to the quantity declared on the Licensees application for Import Permit.
 - 14.4 The AITI approved label is shown below:



14.5 AITI will maintain a database of the Type Approval number (TA No.) of the labels allocated to the Licensee.

15. Method of Labelling

15.1 Licensees shall affix or ensure that there is affixed, on Type Approved Equipment intended for use in Brunei Darussalam before the Type Approved Equipment is displayed or put on sale.

15.2 Only one label is to be affixed on each piece of Type Approved Equipment.

15.3 Labels should not be torn, tampered with or otherwise defaced.

15.4 Diagram below shows sample on how label should be affixed in the following order of preference:

(a) Affixed on battery compartment inside the casing



(b) Affixed on the outside of the equipment



(c) Affixed on packaging box



16. Affixing approved labels on non-Type Approved Equipment constitutes a breach of condition of the Dealer's Licence.

-END-